

Office to let

Globalworth Campus Building 2

Bucharest, Sector 2, 9 Dimitrie Pompeiu Blvd.

Building information

| | |
|----------------------|-------------|
| Building status | Existing |
| Year of construction | 2019 |
| Parking ratio | 1 / 80 sq m |
| Total building area | 28 000 sq m |

Commercial terms

| | |
|--------------------|---------------|
| Office space* | after login * |
| Parking | after login * |
| Service charge* | after login * |
| Minimum lease term | after login * |
| Availability | after login * |

* Asking terms for m²/month

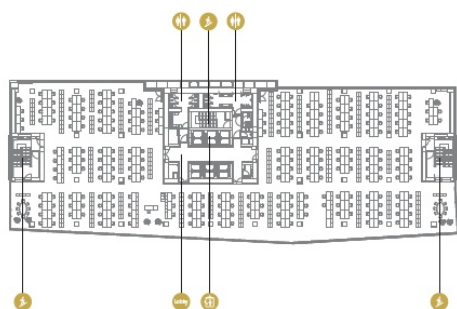
Location



Available space

Building completely leased

Typical floor plan



Public transport

Metro: M1

Tram: 16, 36

Contact



+40 21 302 3400

More information